
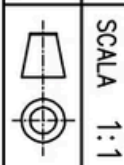
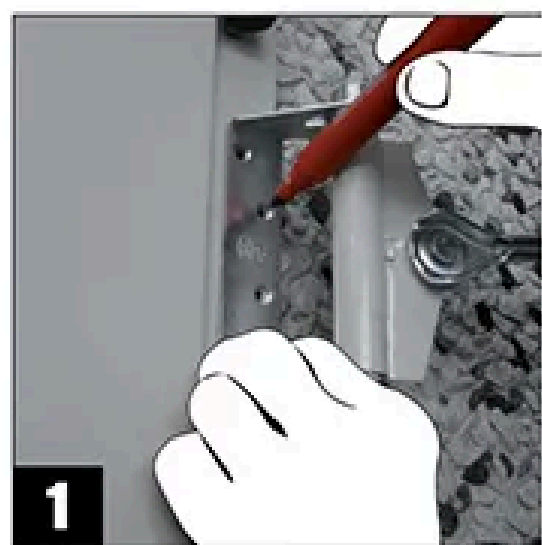
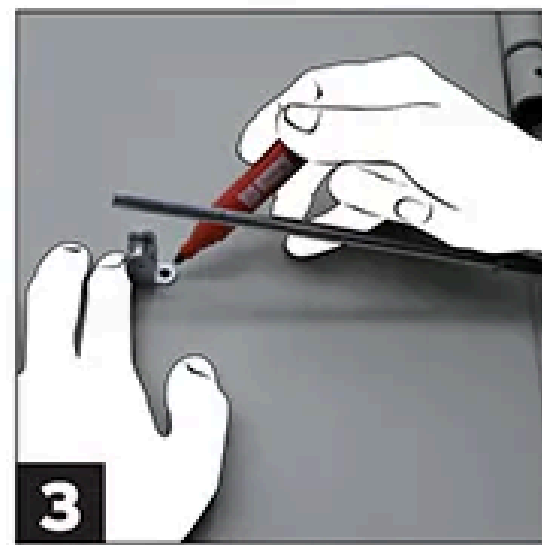


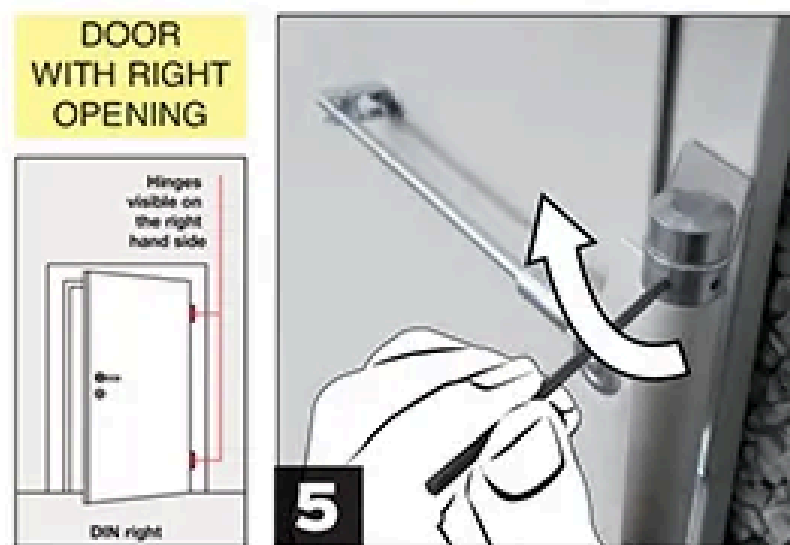
ARTICOLO	00091	REV.	0001	
DESCRIZIONE	Molla da porta tipo "TRIUMPH"	UNITÀ	mm	
PERCORSO	Disegni/Art.00091/Art.00091.dwg	SCALA	1:1	20832 desio (MB) - Italy Via Lavoratori Autodidattici,18 +39-0362-627078/624502 Fax +39-0362-302892 bfm@bfm.it
DISEGNATORE D.F.	DATA 21/11/2018			Proprietà esclusiva di IBFM, S.r.l. che si riserva tutti i diritti a termine di legge con divieto d'uso e riproduzione senza l'autorizzazione scritta da parte dell'azienda. IBFM, S.r.l. si riserva il diritto di apportare modifiche senza preavviso e autonomamente. Exclusive property of IBFM, S.r.l. which reserves all rights by law with the prohibition of use and reproduction without the written agreement of the company. IBFM, S.r.l. reserves the right to make changes without any notification and independently.



- 1**
- IT Segnare i punti di foratura
  - EN Mark the hole positions
  - FR Marquer les trous de fixation
  - ES Marcar los agujeros de fijaje
  - RU Отметить точки бурения



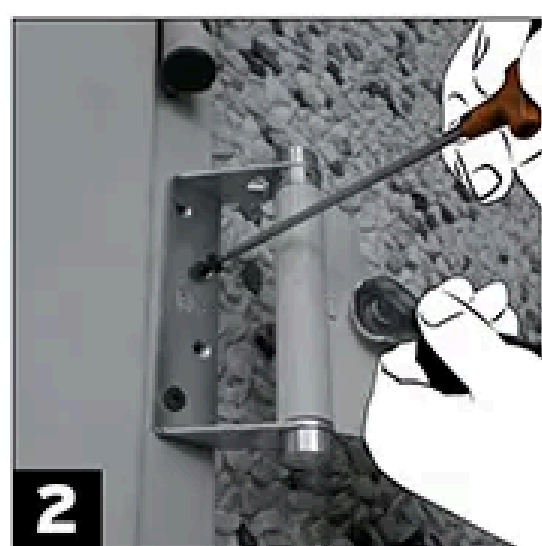
- 3**
- IT Segnare punti per fissaggio carrucola su porta
  - EN Mark the position to fasten the small pulley at the door
  - FR Marquer le point de fixation de la roulette sur la porte
  - ES Marcar los agujeros para fijar el rodillo a la puerta
  - RU Отметьте точки для крепления шкива на двери



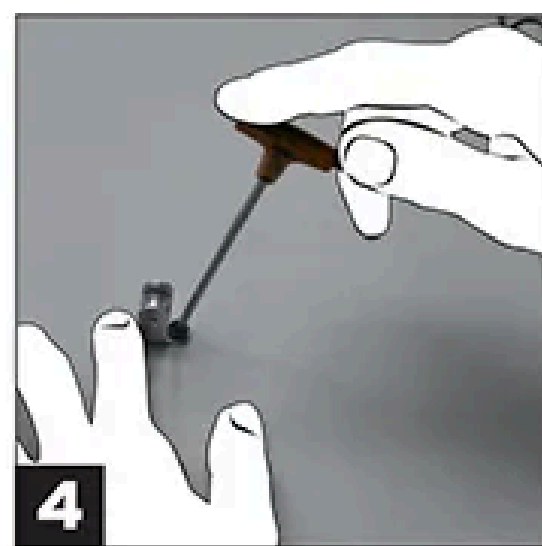
- 5**
- IT Caricamento molla tramite astine di carica (senso orario)
  - EN Loading of the spring tension by the tensioning bar (clockwise)
  - FR Precharger le ressort par moyen de la tige (sens horaire)
  - ES Precarga del muelle para el medio de la fallebita (sentido horario)
  - RU Пружинная нагрузка через зарядные (по часовой стрелке)



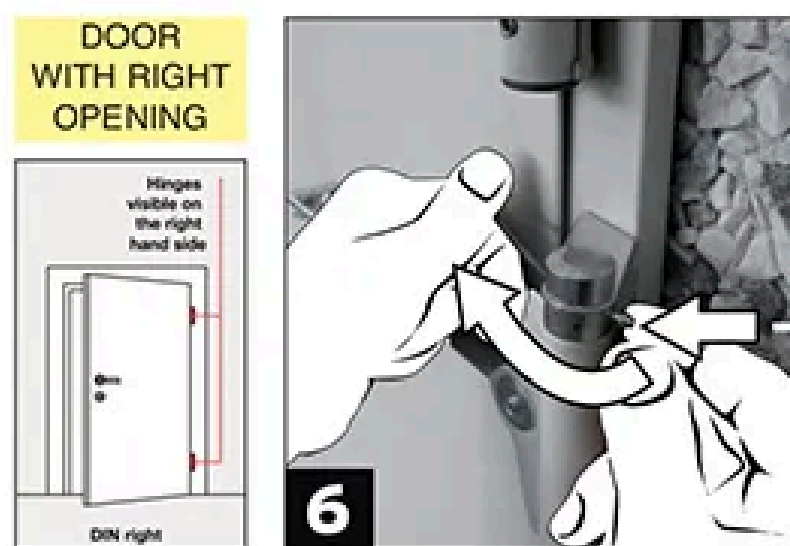
- 5**
- IT Caricamento molla tramite astine di carica (senso antiorario)
  - EN Loading of the spring tension by the tensioning bar (Counterclockwise)
  - FR Precharger le ressort par moyen de la tige (sens anti-horaire)
  - ES Precarga del muelle para el medio de la fallebita (sentido antihorario)
  - RU Пружинная нагрузка через зарядные (против часовой стрелки)



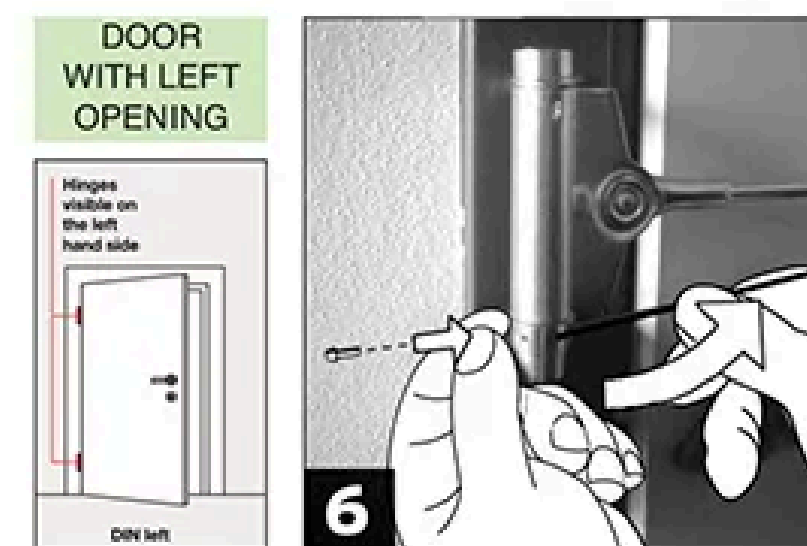
- 2**
- IT Fissaggio al telaio
  - EN Fastening at the frame
  - FR Fixer au chassis
  - ES Fijar al marco
  - RU Крепление к раме



- 4**
- IT Fissaggio carrucola
  - EN Fastening of the small pulley
  - FR Fixer la roulette à la porte
  - ES Fijar el rodillo a la puerta
  - RU Крепление шкива



- 6**
- IT Inserimento chiodino per caricamento molla nel foro adatto
  - EN Insert the pin to load the spring in the suitable hole
  - FR Insérer la goupille dans le trou approprié
  - ES Poner el pernito en el agujero correcto
  - RU Вставка гвоздя для загрузки пружины отверстие



- 6**
- IT Inserimento chiodino per caricamento molla nel foro adatto
  - EN Insert the pin to load the spring in the suitable hole
  - FR Insérer la goupille dans le trou approprié
  - ES Poner el pernito en el agujero correcto
  - RU Вставка гвоздя для загрузки